

Mercuré Tottori Daisen Resort & Spa

OPENING IN APRIL 2024

MERCURE

HOTELS & RESORTS

Welcome to Daisen

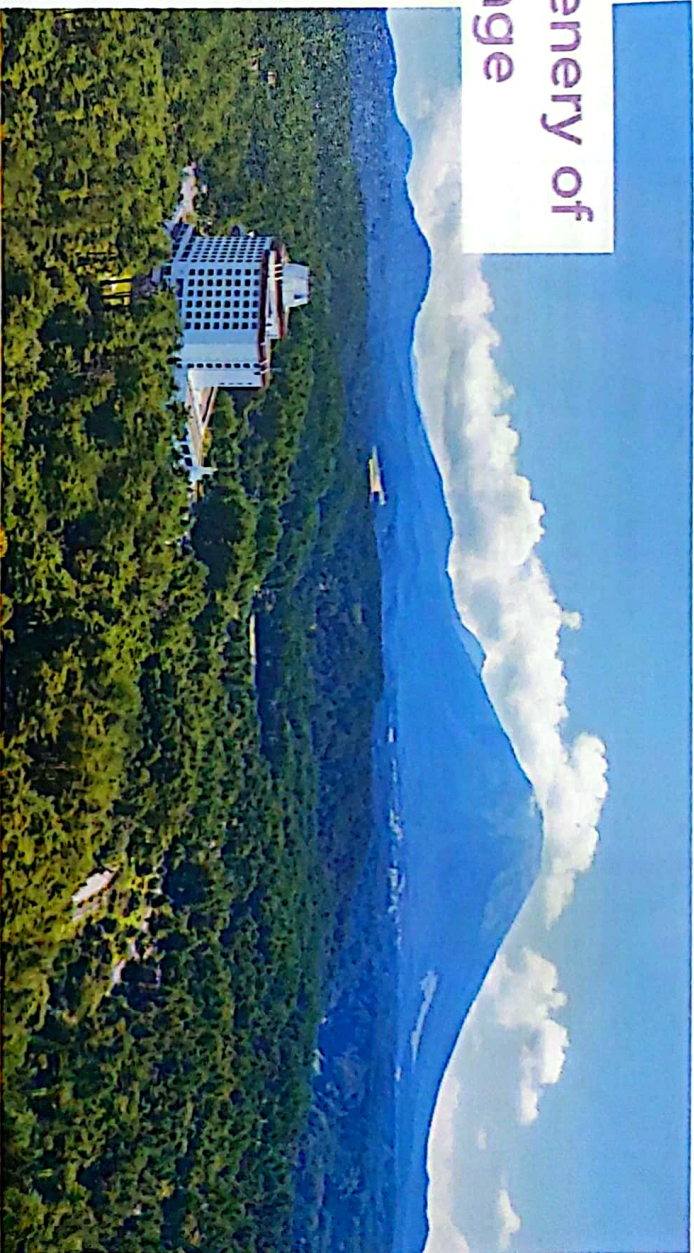
Relaxing Time in the Greenery of the Daisen Mountain Range

Daisen, the highest peak in the Chugoku region at an altitude of 1,709 m (approx. 5606 ft), is a natural heritage site of Tottori along with the Tottori Sand Dunes. This resort hotel is located at the foot of Daisen mountain range surrounded by nature.

As it is located at the foot of the famous Daisen mountain range in Tottori Prefecture, the hotel offers breathtaking views of the mountains.

In addition to enjoying activities around Daisen mountain range, you can also take a day trip to the famous Tottori Sand Dunes. Additionally, you can visit many shrines and temples such as Izumo Taisha Grand Shrine, and visit the Adachi Museum of Art, which exhibits traditional Japanese paintings and beautiful Japanese gardens.

*Image for illustration purposes only.



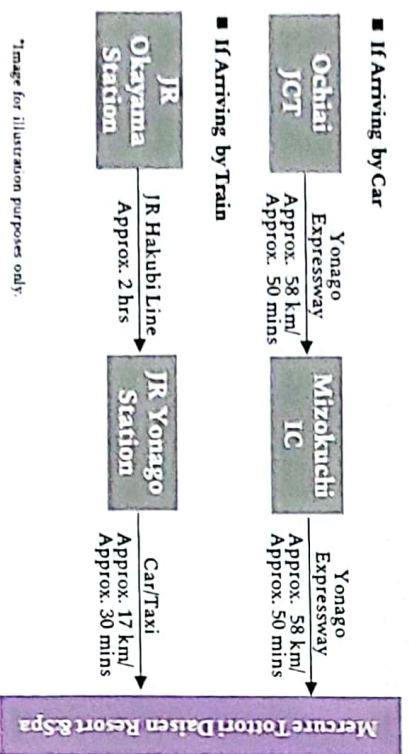
Location & Access to The Hotel

Location of Daisen and Transportation

Located at the entrance to Tottori Prefecture, it takes approximately 15 minutes by car from Mizokuchi IC on the Yonago Expressway, about 3 and a half hours from Osaka and about 3 hours from Hiroshima City.

Approximately 1 hour from Haneda Airport to Yonago Kitaro Airport and from the airport head to JR Yonago Station.
By train, take the Hakubi Line from JR Okayama Station to JR Yonago Station, which takes approximately 1 hour.
A shuttle bus is available from JR Yonago Station that runs twice a day and will take you to the hotel in approximately 30 minutes.

The hotel is conveniently located as a base for sightseeing in the San'in area, with not only Mt. Daisen, but also the Sea of Japan which is about 30 minutes away. Sakaiminato Mizuki Shigeru Road and Adachi Museum of Art is about 50 minutes away, and Izumo Taisha Grand Shrine can be reached in about 90 minutes.



【国際線 International Flight】

- 上海浦東国際空港 ▶ 関西国際空港 約2時間30分
Shanghai To Kansai around 2h30m
- 香港国際空港 ▶ 関西国際空港 約3時間30分
Hong Kong To Kansai around 3h30m
- 台湾桃園空港 ▶ 関西国際空港 約2時間30分
Taiwan To Kansai around 2h30m
- シンガポール・チャングイ空港 ▶ 関西国際空港 約6時間45分
Singapore To Kansai around 6h45m
- 仁川国際空港 ▶ 関西国際空港 約1時間50分
Incheon To Kansai around 1h50m

【国内線 Domestic Flight】

- 東京国際空港 ▶ 米子鬼太郎空港 約1時間
Tokyo To Yonago around 1h
- 札幌空港 ▶ 関西国際空港 約2時間15分
Sapporo To Kansai around 2h15m
- 福岡空港 ▶ 関西国際空港 約1時間15分
Fukuoka To Kansai around 1h15m
- 那覇空港 ▶ 関西国際空港 約1時間45分
Okinawa To Kansai around 1h45m



FACILITIES

1

Restaurant & Lounge

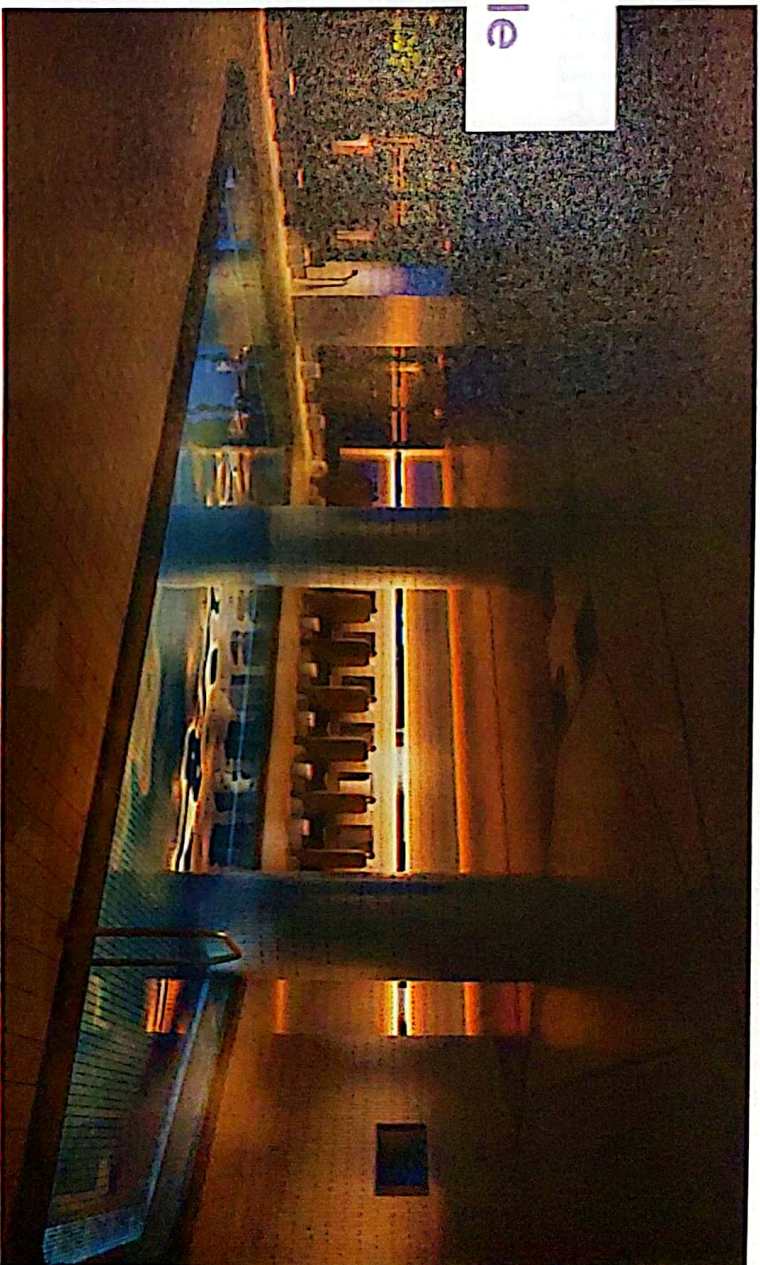
All-Inclusive

Make Your Stay More Elegant and Comfortable

The all-inclusive rate includes dinner, breakfast, drinks and snacks in the lounge, and activities (including hot springs and baths) in the room rate.

Immerse yourself in the soothing scents, sounds, flavors and more with an all-inclusive stay at Grand Mercure. Discover the local charms of the surrounding nature, culture, and traditions of each destination.

* Some drinks and activities are available for a fee. Please be aware that lunch is not available.



Evening Social



Buffet Restaurant



Onsen Lounge



Night Cap

MERCURE TOTTORI DAISEN RESORT&SPA | Restaurant&Lounge-01

*Image for illustration purposes only.

Restaurant & Lounge-01

Buffet Restaurant

Experience the Food Culture of The Region

<Dinner>

The dinner buffet offers a rich variety of dishes presented with a modern flair that celebrate local ingredients and culinary culture unique to the region. Guests can enjoy a variety of seafood and mountain delicacies, as well as dishes prepared right before their eyes. You can also enjoy free-flowing beer, wine, soft drinks, and other beverages.

<Breakfast>

A wide selection of dishes showcase the local ingredients and culinary culture unique to the region. In addition to local dishes, the extensive lineup includes petit hot dogs, pancakes and other dishes that can be customized to your liking. Spend an elegant morning planning your trip in a space filled with the fragrant aroma of baking bread and the comforting aroma of soup stock.

*Image for illustration purposes only.



Dinner Buffet



Morning Buffet



MERCURE DAISEN RESORT&SPA | Restaurant&Lounge-02

Onsen Lounge Lounge for Relaxation On Another Level

<Raga> 3 P.M.- 6P.M.

In the lounge, you can relax with a drink such as sparkling wine or beer, or a soft drink such as coffee, tea, or herbal water. Enjoy a special moment while expanding your imagination for your stay.

<Chotto> 9 P.M.-11 P.M.

Enjoy some mature time at the bar in the lounge to finish your day. Relax in a comfortable space with your favorite drink in hand, reminiscing about your travels, or chatting with loved ones or friends.

ONSEN LOUNGE

Enjoy a relaxing moment in a calm space gently lit by soft light. After soaking in the hot spring (public baths), relax in a serene lounge where you can sip on Japanese tea. In the evening, enjoy "amazake", that has been popular in Japan for a long time.

*Drink offerings may vary depending on the time of day.

*Image for illustration purposes only

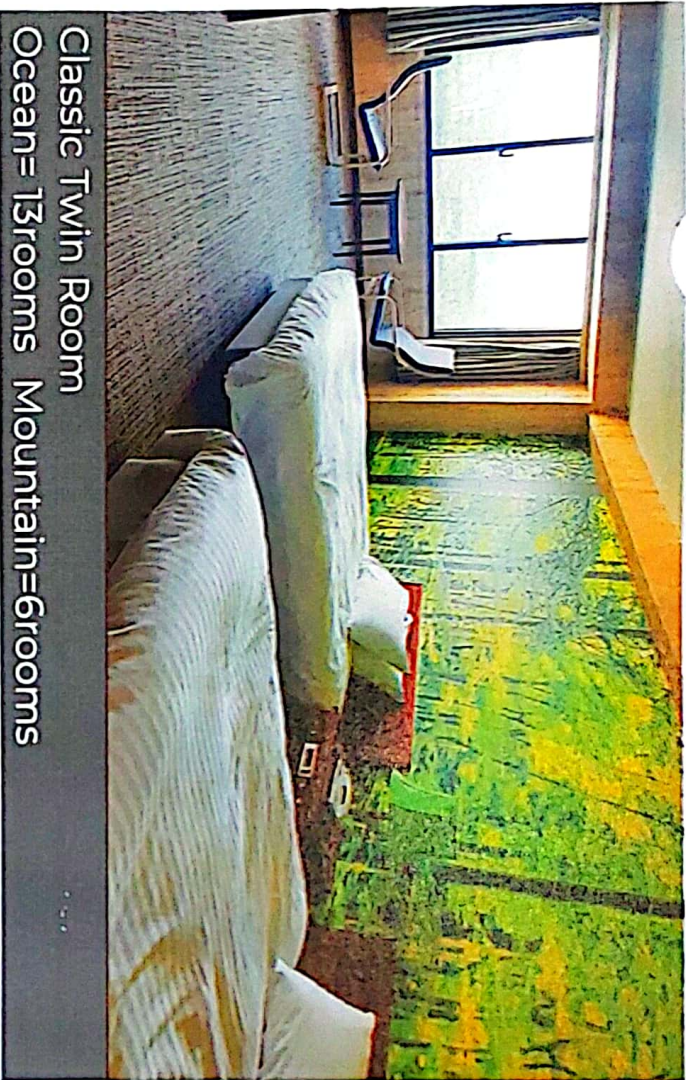


MERCURE TOTTORI DAISEN RESORT&SPA | Restaurant&Lounge-03

FACILITIES

2

Guest Room



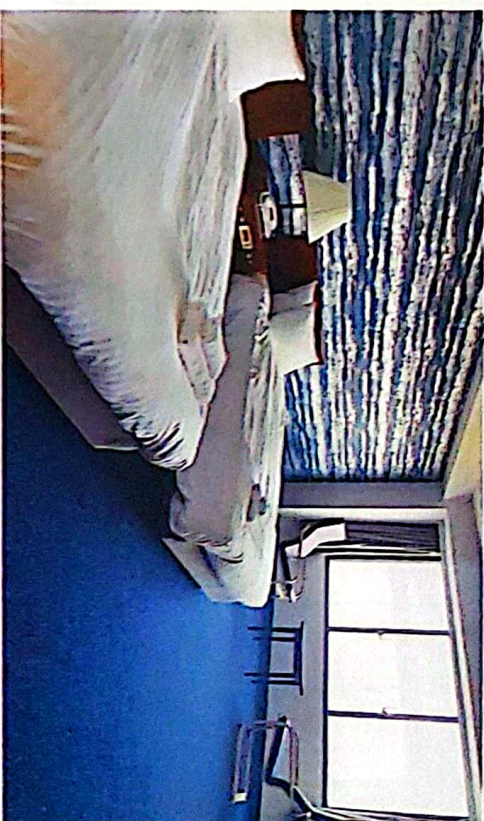
Standard Room Inspired by the Forest and Sea

Located on the 10/F, this guest room offers spectacular views of Daisen mountain range and the Sea of Japan. Relaxing chairs and massage cushions are available to create a space where you experience further relaxation. Humidifying air purifiers are available in all rooms.

*Image for illustration purposes only.

Room information			
Floor Plan	10/F	2 beds	
Room Size	36 sqm	Bed size	1,200 x 2,000 mm
Occupancy	1-2 guests		

Facilities
Bathroom with separate sink from bathtub and toilet
(Bidet toilet seat)/Humidifying air purifier/TV/Free Wi-Fi/
Electric Kettle/Hair dryer/Refrigerator/Safe (Complimentary)





Classic Twin = 88rooms / Japanese-western =22rooms / Japanese = 70rooms

Traditional Classic Rooms For Your Choice

A spacious 36 sqm (approx. 387 sqft) room with an open feel.
Fundamentally, semi-double beds are provided.
Studio beds are available for 3 or more guests.
The Japanese style room is 10 tatami-mat-size (approx. 18 sqm/ 193 sqft) in size with a veranda and can accommodate up to 5 guests.

Room information (Western-Style Room/ Japanese and Western-Style Room)	
Floor Plan	7/F-10/F
Room Size	36 sqm
Occupancy	1-5 guests
Bed size 1,200 x 2,000 mm	
Extra bed or 2-3 sets of futon	
Facilities	
Bathrub/Toilet/TV/Free Wi-Fi/Electric Kettle	
Hair dryer/Refrigerator/Safe (Complimentary)	

Room information (Japanese Tatami Style Room)	
Floor Plan	4/F-6/F
Room Size	18-24 sqm
Occupancy	1-5 guests
5 sets of futons	
Futon size 900 x 2,000 mm	
Facilities	
Bathrub/Toilet/TV/Free Wi-Fi/Electric Kettle	
Hair dryer/Refrigerator/Safe (Complimentary)	

*Image for illustration purposes only.

FACILITIES

3

Activities

Observation Deck Spectacular View! Feel the Majesty of Daisen Mountain Range and the Stars

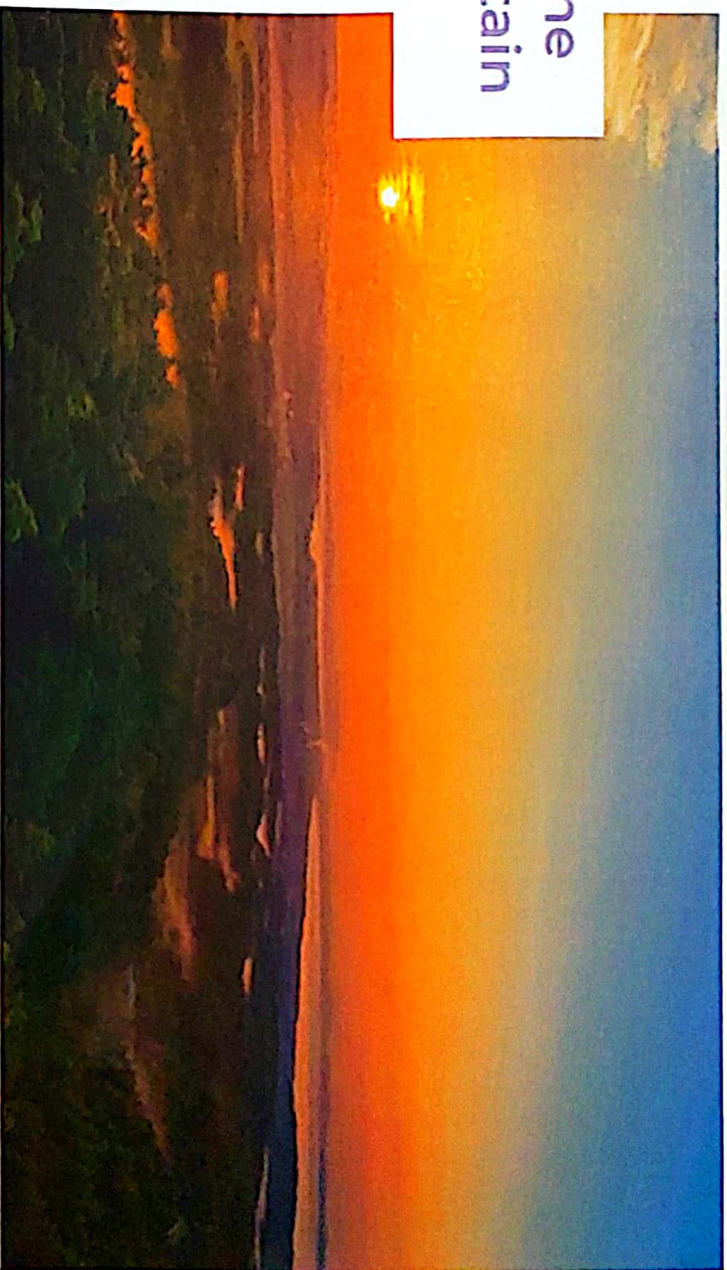
The hotel is located at the foot of Daisen mountain range. As there are no large buildings in the surrounding area, you can enjoy a unique view of Daisen and the Sea of Japan from the guest rooms and lobby. A spectacular view is guaranteed.

Located at an altitude of approximately 400 m, "The LOUNGE" allows you to relax and enjoy beer, sparkling wine, or soft drinks while looking out at both the mountain and ocean views.

Tottori Prefecture is dotted with many spots around the area where you can see the stars so beautifully that it is called Hoshitori Prefecture.

There are many natural activities, and it is an environment where you can directly experience the majesty of nature.

*Image for illustration purposes only.

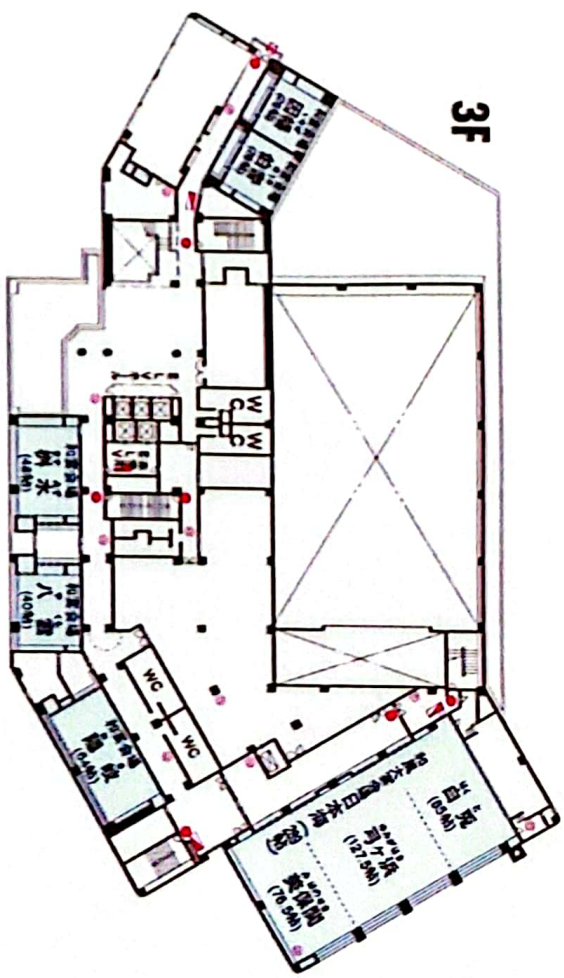
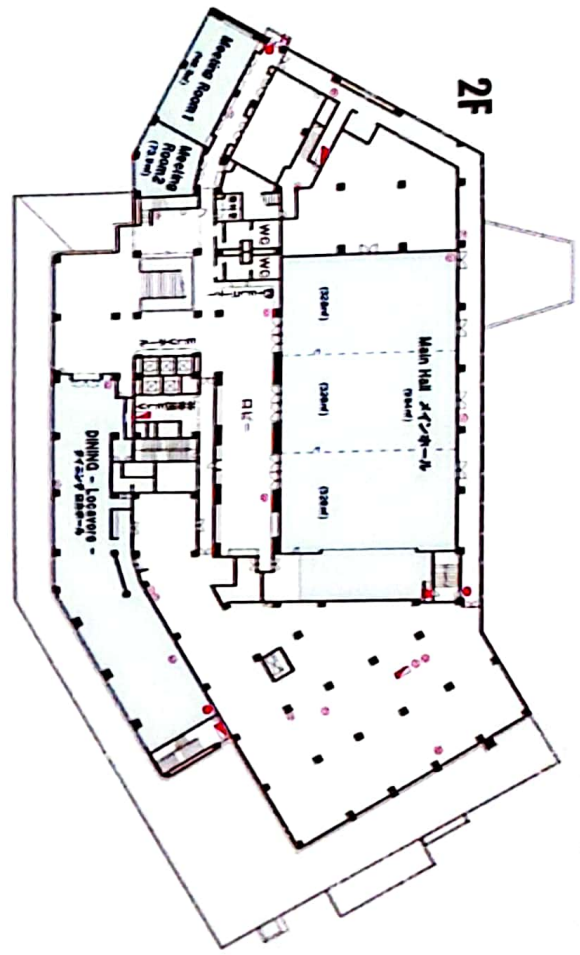





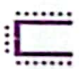



MERCURE TOTTORI DAISEN RESORT&SPA | Activities-02

FACILITIES

4

Meeting & Event



ROOM NAMES								Surface (m ²)
Main Hall	750	600	162	750	400	-	1000	984
Meeting Room1	100	60	42	36	48	128	70	148
Meeting Room2	30	24	24	18	24	12	30	74
Large Japanese-Style Banquet Hall Nihonkai	-	-	-	-	-	230	-	-
Medium Japanese Style Banquet Hall Oki	-	-	-	-	-	40	-	-
Japanese-Style Banquet Hall Yakuno/Masumizu	-	-	-	-	-	30	-	-
Japanese-Style Banquet Hall Hokk/inaba	-	-	-	-	-	12	-	-

*Image for illustration purposes only.

徳田 聡

Satoshi Tokuda

セールス

アシスタントマネージャー

Assistant Manager

Sales

INTL Tour
Reservation No
03-6674-8442

TEL +81 (0)859 68 2333

Satoshi.TOKUDA@accor.com

メルキュール鳥取大山リゾート&スパ

Mercure Tottori Daisen Resort & Spa

〒689-4108 鳥取県西伯郡伯耆町丸山 1647-13

1647-13 Maruyama, Hoki-cho, Saihaku-gun

Tottori, 689-4108, Japan

MERCURE.COM | ALL.COM